

Valentin GmbH & Co. Flugzeugbau KG
Flugplatzstraße 18, 8728 Hassfurt
Telefon: 0 95 21 - 20 41
Herstellungsbetrieb LBA I - B 27

Technical Note
No. 329-003

Subject: Lower mounting of the rudder

Affected: Sailplane MISTRAL C (Type Certificate No. 329) all serial-nos.

Urgency: Action 1: Before next flight and after each 25 flight hours
Action 2: March 31st, 1990

Reason: Failure of a rudder-mounting

Action 1: a) Measure distance between web of fin and center of swivel head.
b) Remove swivel head
c) Inspect threaded shank of swivel head for deformation or cracks (magnifying glass 5x)
d) If no objection: Install swivel head reestablishing distance measured in a)

Action 2: Replace swivel head by mounting, acc. drawing no. TM 329-003 page 1-3.

Material: Material kit "TM 329-003" including the installation instruction and drawings is available from:

Valentin GmbH & Co
Flugzeugbau KG
Flugplatzstr. 18
8728 Hassfurt

Weight and balance: Influence negligible

Accomplishment and certification: Action 1: By a qualified person, entry in the sailplanes logbook.

Action 2: In accordance with the installation instruction by an approved service station, certification by a licensed inspector in the sailplanes logbook.

Hassfurt, August 30th 1989

Helmut Faust

LBA-approved:
The German original of this Technical Note has been approved by the LBA under the date of *Sept. 12, 1989* and is signed by Mr. *SKOV*

The translation into English has been done by best knowledge and judgement. In any case of doubt, the German original is authoritative.

Valentin GmbH & Co. Flugzeugbau KG
Flugplatzstraße 18, 8728 Haßfurt
Telefon: 0 95 21 - 20 41
Herstellungsbetrieb LBA I - B 27

Sailplane
MISTRAL C

Installation Instruction

"Lower mounting of the rudder" TM 329-003

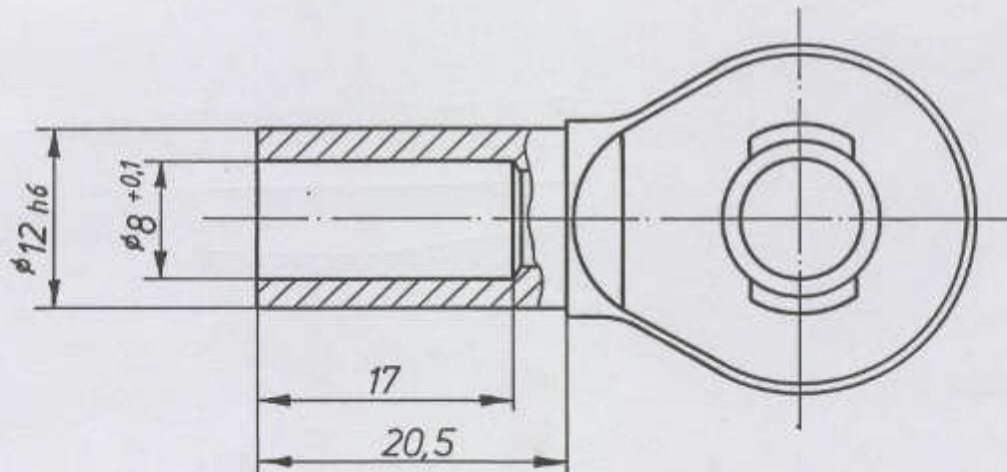
The lower mounting of the rudder consists of a fitting glued to the fin and a swivel head that is screwed into the fitting. The swivel head has to be replaced by a new mounting (drawing TM 329-003 page 1-3) according to the following instruction:

1. Disconnect the rudder from the controls and dismantle it.
2. Measure distance "C" (acc. drawing TM 329-003 page 3) before swivel head is removed, dismantle the swivel head.
3. Carefully bore the M8-thread out of the tube to remove it from the fitting and rub out the tube with a broach to ϕ 14 H7.
4. Adapt the swivel head with the case (acc. drawing TM 329-003 page 2) and reestablish the distance "C".
5. Drill the holes acc. to drawing TM 329-003 page 3 and rivet the swivel head with the case to the fitting.
6. Protect plain metal parts against corrosion by putting on some varnish.
7. Reinstall the rudder and reconnect it to the controls.
8. Let a licensed inspector certify the installation of the new swivel head and the accomplishment of the technical note in the sailplanes logbook.

Hassfurt, August 30th 1989

Helmut Fendt

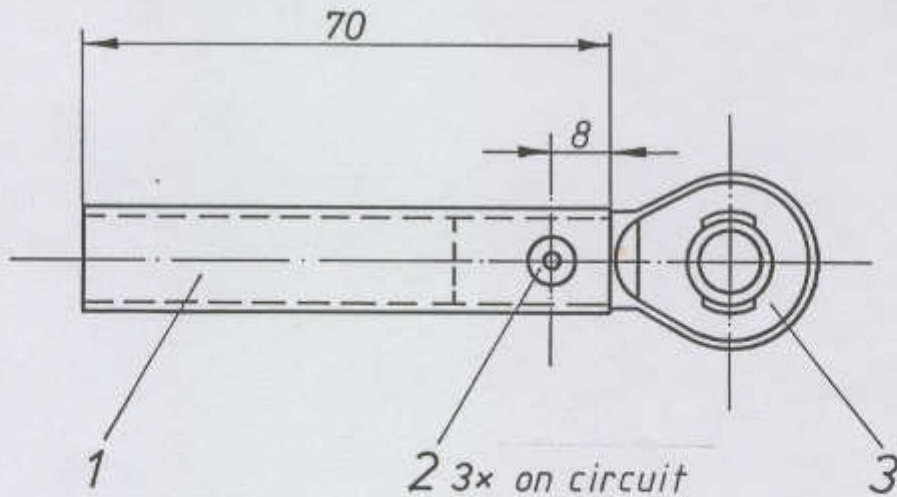
Helmut Fendt



Touch up of swivel head EF 8

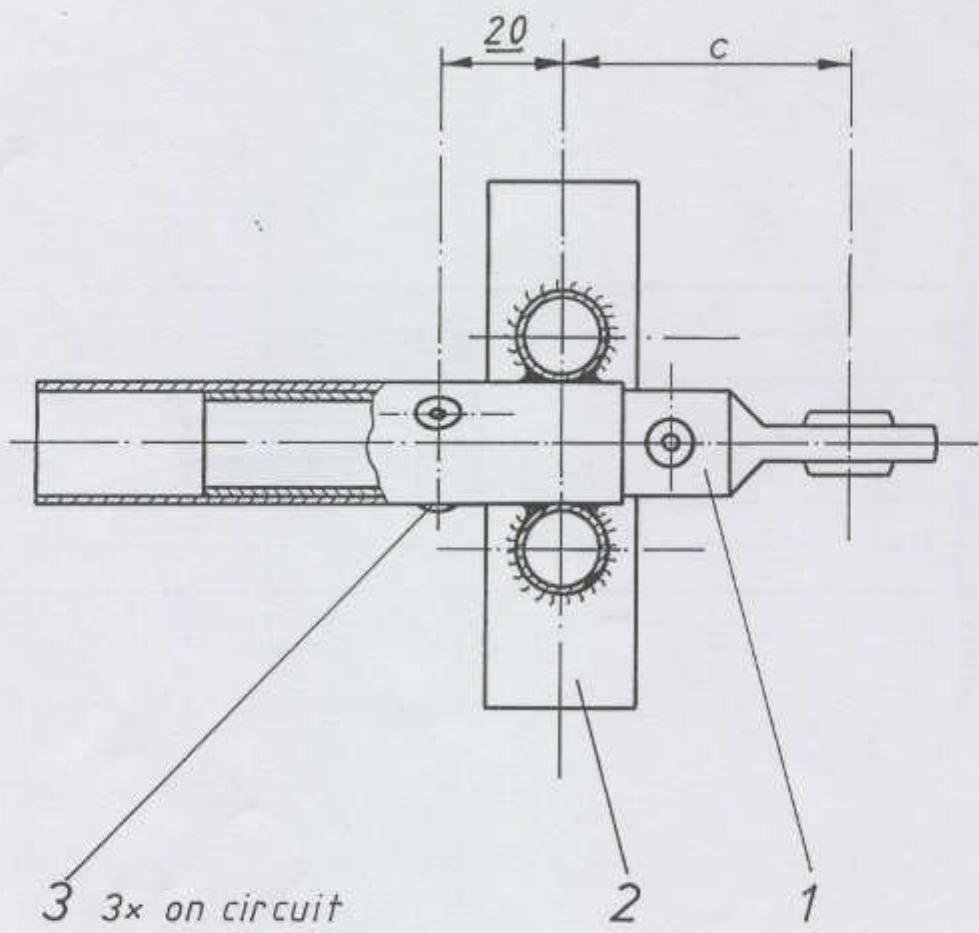
- 1. Turn over connection to $\phi 12_{h6}$*
- 2. Bore the female thread up to $\phi 8^{+0.1}$*

		<i>DIN 7168</i>		<i>Maßstab 2:1</i>	
		<i>mittel</i>		<i>swivel head Durbal EF 8</i>	
		<i>Datum</i>	<i>Name</i>	<i>Mistral C</i> <i>lower mounting of the</i> <i>rudder</i>	
		<i>Bearb. 29.8.89</i>	<i>Zühner</i>		
		<i>Gepr. 30.8.89</i>	<i>Fant</i>		
		<i>Norm</i>			
				<i>TM 329-003</i>	<i>Blatt</i> <i>1</i>
					<i>3 Bl.</i>
<i>Zust.</i>	<i>Änderung</i>	<i>Datum</i>	<i>Name</i>		



3	1	Swivel head EF 8	TM 329-003 pg. 1	
2	3	Rivet $\phi 4,0 \times 6,0$		VA
1	1	Tube $\phi 14 \times 1 \times 70$		1.7734.4
Pos.	Quant.	Indication	Part no.	Material

		DIN 7168 mittel		Maßstab 1:1	
				swivel head with case	
		Datum	Name	Mistral C lower mounting of the rudder	
		Bearb. 29.8.89	Stiller		
		Gepr. 30.8.89	F. J. H.		
		Norm			
				TM 329-003	Blatt 2
					3 Bl.
Zust.	Änderung	Datum	Name		



measure distance *c* before swivel head is removed

3	3	Rivet $\phi 4,0 \times 6,0$		VA
2	1	Lower rudder fitting	ZR 005	
1	1	Swivel head with case	TM 329-003 pg. 2	
Pos.	Quant.	Indication	Part no.	Material
		DIN 7168 mittel	Maßstab 1:1 assembly	
		Datum	Name	Mistral C lower mounting of the rudder
		Bearb. 29.8.89	32h	
		Gepr. 30.8.89	F.M.	
		Norm		
				Blatt 3 3 Bl.
Zust.	Änderung	Datum	Name	